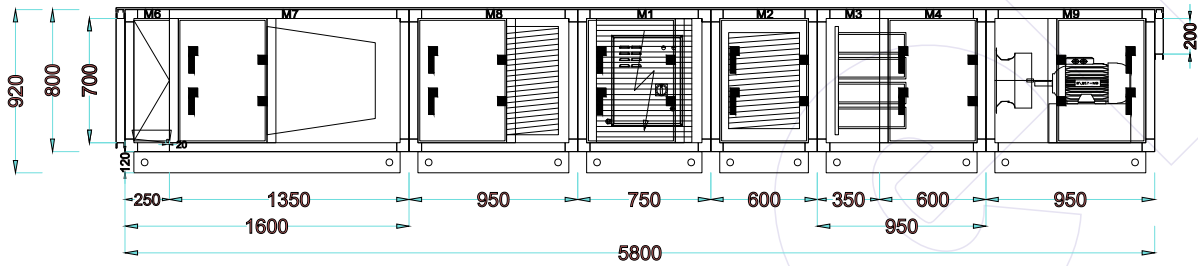
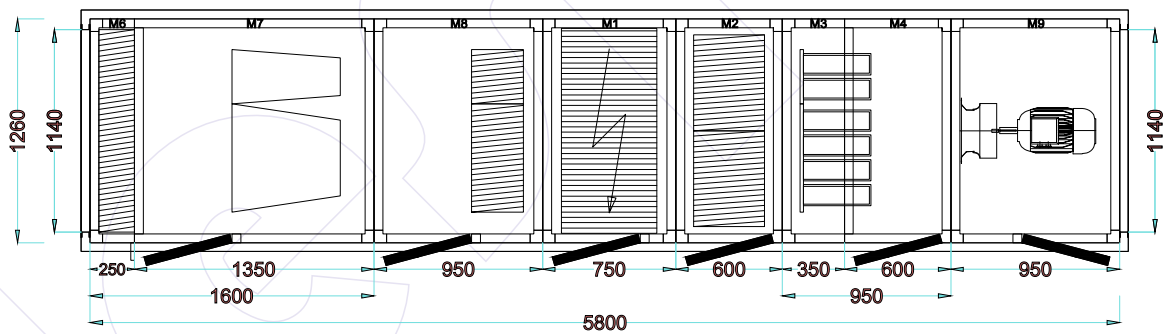


RIGHT VIEW



TOP VIEW



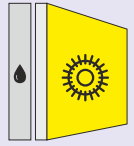
GENERAL SPECIFICATIONS

Airflow 5000 m ³ /h	Filter 1 Drop Eliminator + Bag Filter	Model / Frame 50x50 mm	Dimensions (mm) (Size+Pedestal) W 1260 x H 920 x L 5800
Air Velocity 1,71 m/s	Filter 2 EPA Filter	Insulation Material 50 mm Rockwool 70 kg/m ³	Total Weight 1157 kg
Fan Model RLM E6-3540	Filter 3 Electrostatic Filter	Outside Sheet Material 0,8 mm Painted Galvanize	Base Height 120 mm
	Filter 4 UVC Ozone Chamber	Inside Sheet Material 1 mm Galvanize	Motor Power 5,5 kW
	Filter 5 Activated Carbon Filter		Total Absorbed Power 3,77 kW

Specific Fan Power (SFP Total) 124,8 W/(m ³ /s)	ErP Code NRVU-UVU	fs-Pref (W-S) 0,92	External Static Pressure 500 Pa
--	-----------------------------	------------------------------	---

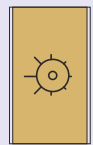
FILTER (M8/M7)

Model	Droplet Eliminator / Bag Filter	Section weight	284 kg
Section length	1600 mm	Bag Filter	
Max. Air flow rate	5000 m ³ /h	Efficiency class EN779	F7
Design pressure drop	249 Pa	Filter frame	Galvanised steel
Eliminator material	Aluminium	Media type	Meltblown synthetic media
Eliminator model	ALT-55510	Max. Operating Temp.	93 °C
Drain pan material	Stainless Steel	Air velocity	2,67 m/s
Drain	1 1/2"	Size / qty.	1 pcs. 592x592x610mm 1 pcs. 592x287x610mm



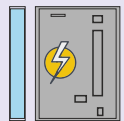
FILTER (M6)

Model	Epa Filter	Section weight	152 kg
Section length	950 mm	Air velocity	2,67 m/s
Max. Air flow rate	5000 m ³ /h	Size / qty.	1 pcs. 592x592x292mm 1 pcs. 592x287x292mm
Design pressure drop	438 Pa		
Efficiency class EN 1822	E11		
Filter frame	Galvanised steel		
Media type	Fibreglass		
Max. Operating Temp.	93 °C		



FILTER (M1)

Model	Electrostatic Filter	Section weight	210 kg
Section length	750 mm	Pass type	Single Pass
Max. Air flow rate	6000 m ³ /h	Efficiency	95% single pass DOP Test 96% single pass ASHRAE 52.2-2012
Design pressure drop	50 Pa	From	0.01 microns - 10 microns
Case x qty.	DE60	Drain	1 1/2"
Type	Plate - Cell	Features	Short circuit, arc protection and auto restore PS. BMS terminals provided Auto power cut-off when door is opened Indicator LEDs for normal or wash indicator Set of Terminals for remote LED
Total cell qty.	2		
Pre-filter	Metalic Cassette Filter		
Total power	154 W		
Voltage	1 ph / 220-240 V / 50Hz		
Ionising voltages	High Voltage: 12KVdc, Low Voltage: 6KVdc		



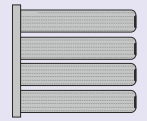
FILTER (M2)

Model	UVC Ozone Chamber	Section weight	122 kg
Section length	600 mm	Ballast type	D-PH1-800
Max. Air flow rate	6000 m ³ /h	Ballast qty.	8
Design pressure drop	80 Pa	Total power	328 W
Case x qty.	DOZ-60-8A	Voltage	230V - 50Hz
Lamp type	D-GPH843	Rated life	9000 hours
Lamp qty.	8		
Tube diameter	15mm		
Arc length	762mm		



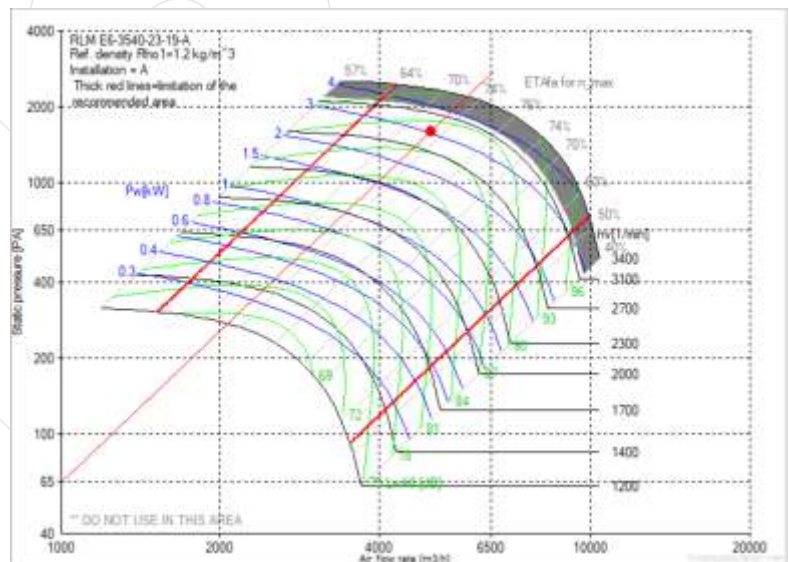
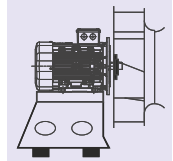
FILTER (M3)

Model	Activated Carbon	Section weight	148 kg
Section length	950 mm	Carbon type	Granule AC - 4 mm pellet
Max. Air flow rate	5160 m ³ /h	Carbon weight	~3,5 kg per cartridge
Design pressure drop	272 Pa	Max. Relative humidity	70%
Case type	Cylindrical Cartridge	Eff. Work. Max. Temp.	40° C
Case material	Painted Galvanized Steel	Iodine	900 mg/g (AWWA B 600-78)
Gasket	Epdm	Specific surface area	1000 m ² /g
Cartridge dimensions	Ø145 x 600 mm	Density	550 kg/m ³ (ASTM D 2854)
Total cartridge qty.	24 pcs	CCI adsorption	50% (ASTM D3467)
Total carbon weight	84 kg		



EXHAUST FAN (M5)

Air Flow 5000 m ³ /h	Motor Type AC-GM 132 S-2A	Fan Model Nicotra-Gebhardt-RLM E6-3540-23-19-A	Quantity 1
Internal Static Pressure 1099 Pa	Motor Po./Pha./Volt./Freq. 5,5 kW/3P/380V/50V-Hz	Power Margin 14,16%	Section Length 1250 mm
External Static Pressure 500 Pa	Motor Speed 3000 (2870) rpm		Section Weight 241 kg
Total Static Pressure 1599 Pa	Fan Bush Number 2012		
Total Pressure 1642 Pa	Motor Shaft Diameter Ø38 mm		
Total / Static Efficiency 75,00 / 73,00 %			
Motor / Invertor Efficiency 85,90 / 97,00 %			
Shaft Power / Absorbed Power 3,05 / 3,55 kW	Absorbed Power With VFD 3,66 kW		
Fan Speed 2896 rpm (Max. 3150 rpm)	Running Frequency 50,45 Hz (Max. 54,88 Hz)		
	Air Density 1,2 kg/m ³		
Specific Fan Power (SFPe int) 124,8 W/(m ³ /s)	Electrical Current 5,56 A (Max. 10,02 A)		



Exhaust Fan Sound Power Level (dB)

Hz	63	125	250	500	1000	2000	4000	8000	LwA-tot	
Outlet Side	84,0	93,0	87,0	84,0	84,0	82,0	77,0	72,0	89,0	dBa
Inlet Side	81,0	91,0	86,0	82,0	79,0	76,0	74,0	68,0	85,0	dBa

*The fan system effect is taken into account in the fan performance
*The fan calculated for wet conditions

CONTROL BOARD

HMI Touch Screen (Room) 7" HMI Box	Standard Specificaitons
Variable Frequency Drive (VFD) 5,5 kW	• BMS integration (Modbus RTU, Modbus TCP/IP, BACnet IP)
Main Controller (PLC) Yes	• Variable fan speed control
	• Electrostatic Filter/Bag/EPA dirtiness info
	• UVC/Activated carbon filter integrity monitor (Time Counter)
	• Door switch info
	• Adaptation to fire safety system / fire mode
	• Air volume set, monitoring and control from the room HMI Box
	• Detailed daily and weekly time scheduling

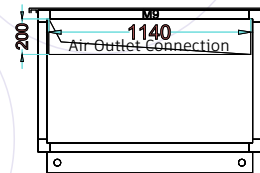
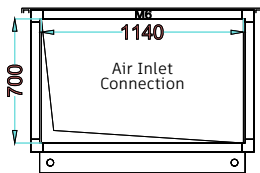
SOUND POWER LEVEL (dB)

Frequency Hz	125	250	500	1000	2000	4000	8000	LwA-tot	
Airborne Sound Power Level	61,0	64,0	51,0	49,0	47,0	42,0	29,0	58,0	dBa
Air Outlet Induct Sound Power Level	80,0	91,0	82,0	83,0	81,0	79,0	71,0	89,5	dBa
Air Inlet Induct Sound Power Level	45,0	59,0	53,0	46,0	51,0	48,0	41,0	57,5	dBa

CASING ACOUSTICAL INSULATION [dB]

Frequency Hz	125	250	500	1000	2000	4000	8000	
	19,0	27,0	31,0	34,0	34,0	37,0	42,0	dBa

AIR CONNECTIONS



Airflow 5000 m ³ /h	Connection Type Flange
Air Velocity 1,74 m/s	Pressure Drop 0 Pa
Dimensions W 1140 mm x H 700 mm	Control No

Airflow 5000 m ³ /h	Connection Type Flange
Air Velocity 6,09 m/s	Pressure Drop 10 Pa
Dimensions W 1140 mm x H 200 mm	Control No

OPTIONS (non-standard)

- Electric motor out of air stream
- Special control scenarios on request
- Temperature or VOC control
- Motorized damper for inlet/outlet connections
- Damper modulation of ecology unit
- Fire damper
- Rain louver
- Bulkhead light
- IOT Module (4G or Ethernet)
- Silencer unit